

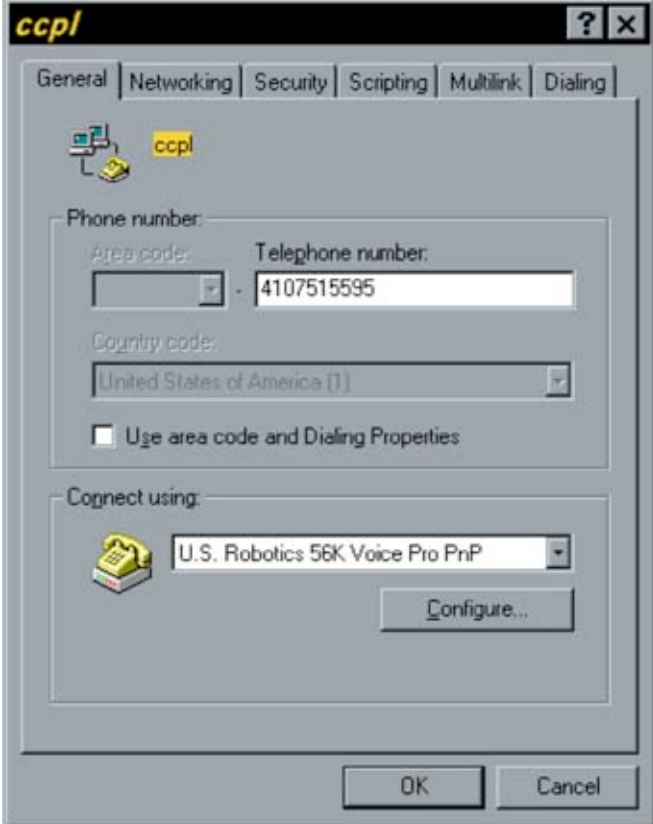
Windows ME Setup

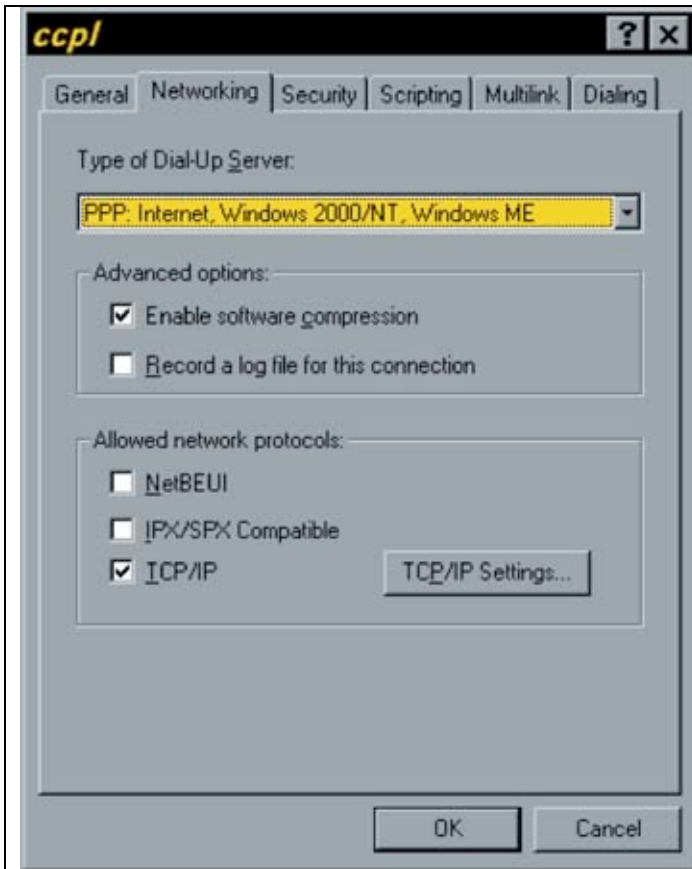
Read through the directions prior to setting up your computer. You need to have Microsoft Internet Explorer or Netscape already installed. We do not send any software or CDs.

Click on Start → Settings → Dial Up Networking. If the dial up networking wizard opens, type in CCPL for the connection name. If the wizard does not open, double click on the "Make New Connection" icon and then proceed.

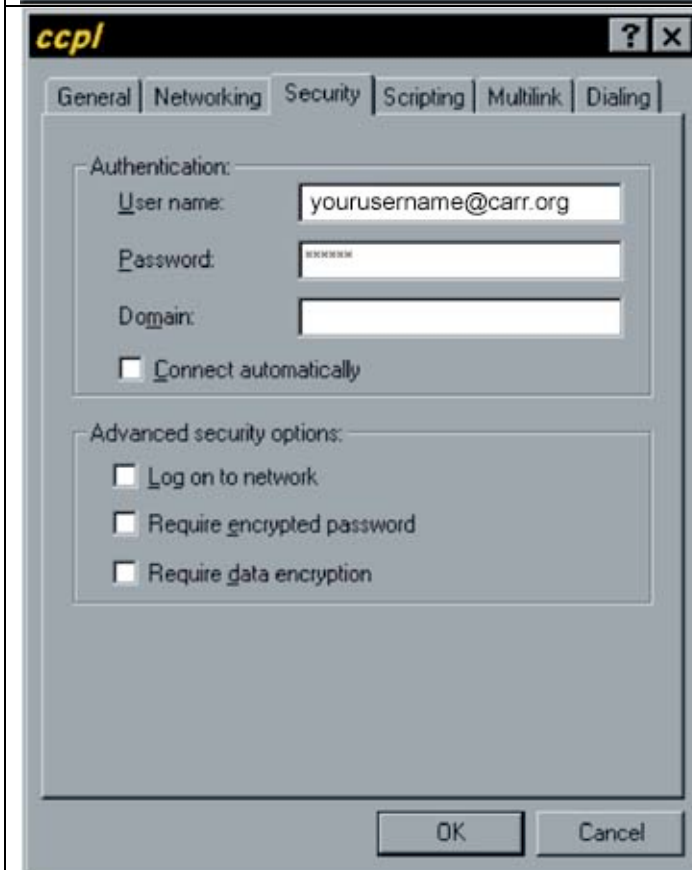
Click "Next" and you will see the phone number screen. Leave the area code blank and enter the phone number 4107515595 (use no dashes or spaces when entering the phone number). Mt. Airy customers should use 3018296074. Leave the area code box empty. Click "Next" and then click "Finish."

After the connection is created, if the dial up networking window is not open again, go to Start → Settings → Dial Up Networking. Right click on the CCPL icon and then select Properties from the drop-down menu. You will see the following screens.

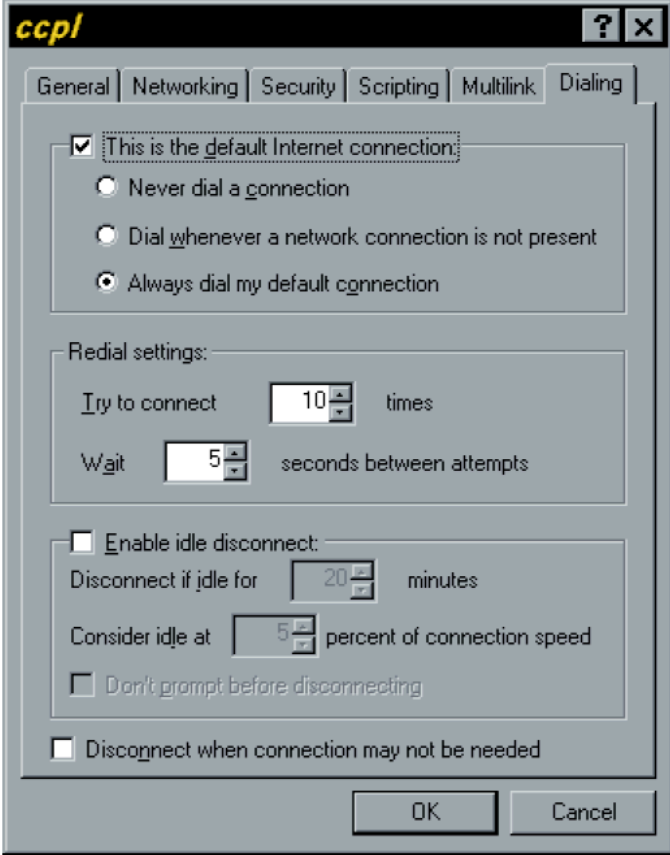
	<p>Remove the check in the box labeled "Use area code and Dialing Properties". Next, click on the "Networking" tab</p>
---	--



You should not need to make any changes to the Networking screen. However, make sure that the only boxes checked are the ones shown.



Click on the "Security" tab and enter your email address in the User name field and your password in the Password field. Leave all boxes unchecked.



The screenshot shows the 'ccpl' application window with the 'Dialing' tab selected. The window has a title bar with 'ccpl' and standard window controls. The 'Dialing' tab is active, showing several options:

- This is the default Internet connection:
 - Never dial a connection
 - Dial whenever a network connection is not present
 - Always dial my default connection
- Redial settings:
 - Try to connect times
 - Wait seconds between attempts
- Enable idle disconnect:
 - Disconnect if idle for minutes
 - Consider idle at percent of connection speed
 - Don't prompt before disconnecting
- Disconnect when connection may not be needed

At the bottom of the window are 'OK' and 'Cancel' buttons.

Click on the "Dialing" tab and make sure that the same boxes are checked as in this figure.

Click on the "OK" button to save all your changes and exit. **If you do not click on "OK" to exit this window, your changes will not be saved.**

You can now double-click on the CCPL icon and you will see a dial-up connection screen. Enter the email address that we sent you in the username box and the password that we sent you in the password box. Click the "Connect" button and your system should dial in and connect to the Internet. Once you are connected you can open your browser software (Microsoft Internet Explorer or Netscape).