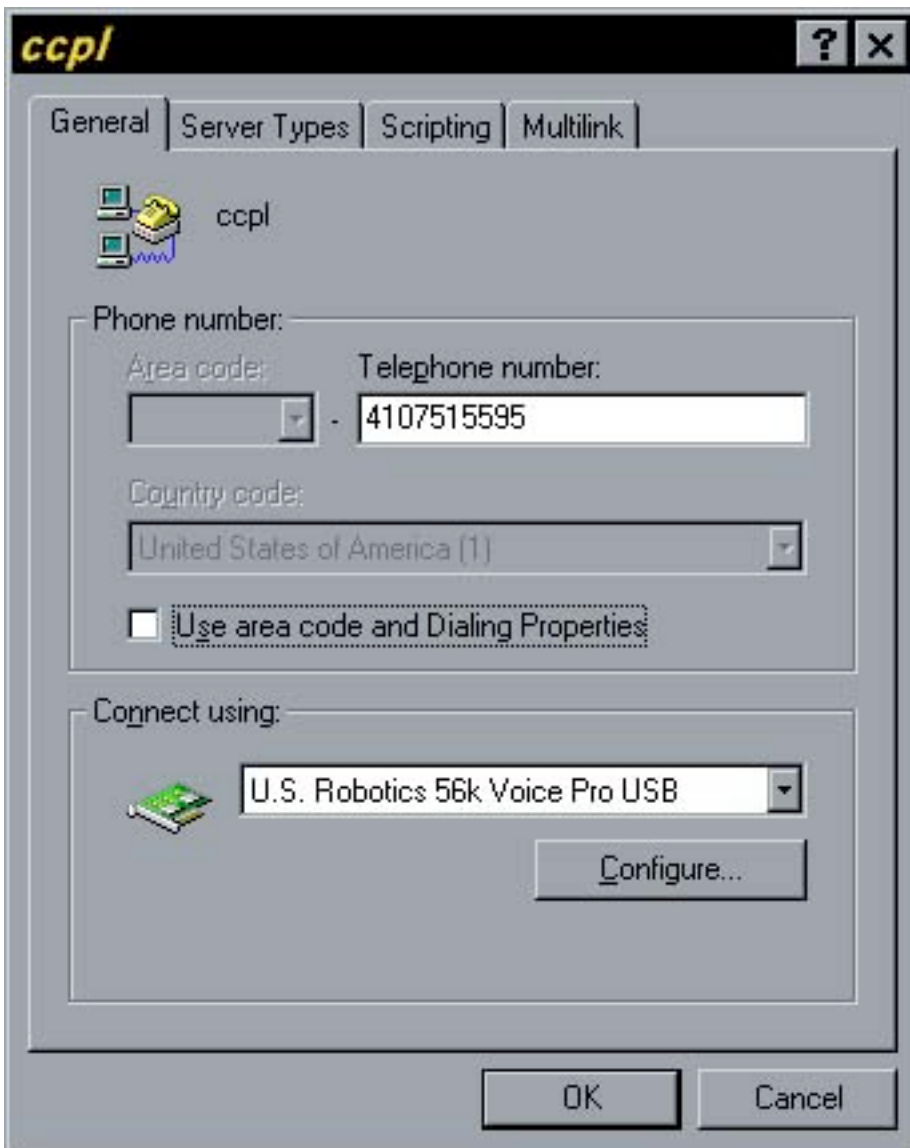


Windows 95 / 98 Setup

Connecting to CCPL using Windows 95 or 98 is very similar. Read through the directions prior to setting up your computer. You need to have Microsoft Internet Explorer or Netscape already installed. We do not send any software or CDs.

Turn on your computer. Double-click on the icon "My Computer." You will see an icon for "Dial Up Networking" (DUN). Double-click on DUN to open the set up screen.

Double-click on "Make a New Connection" in the DUN window. Type the name for your connection, "**CCPL**". Click "Next" and enter the phone number **4107515595** (use no dashes or spaces when entering the phone number). Mt. Airy customers should use **3018296074**. Leave the area code box empty. Click "Next", then click "Finish."

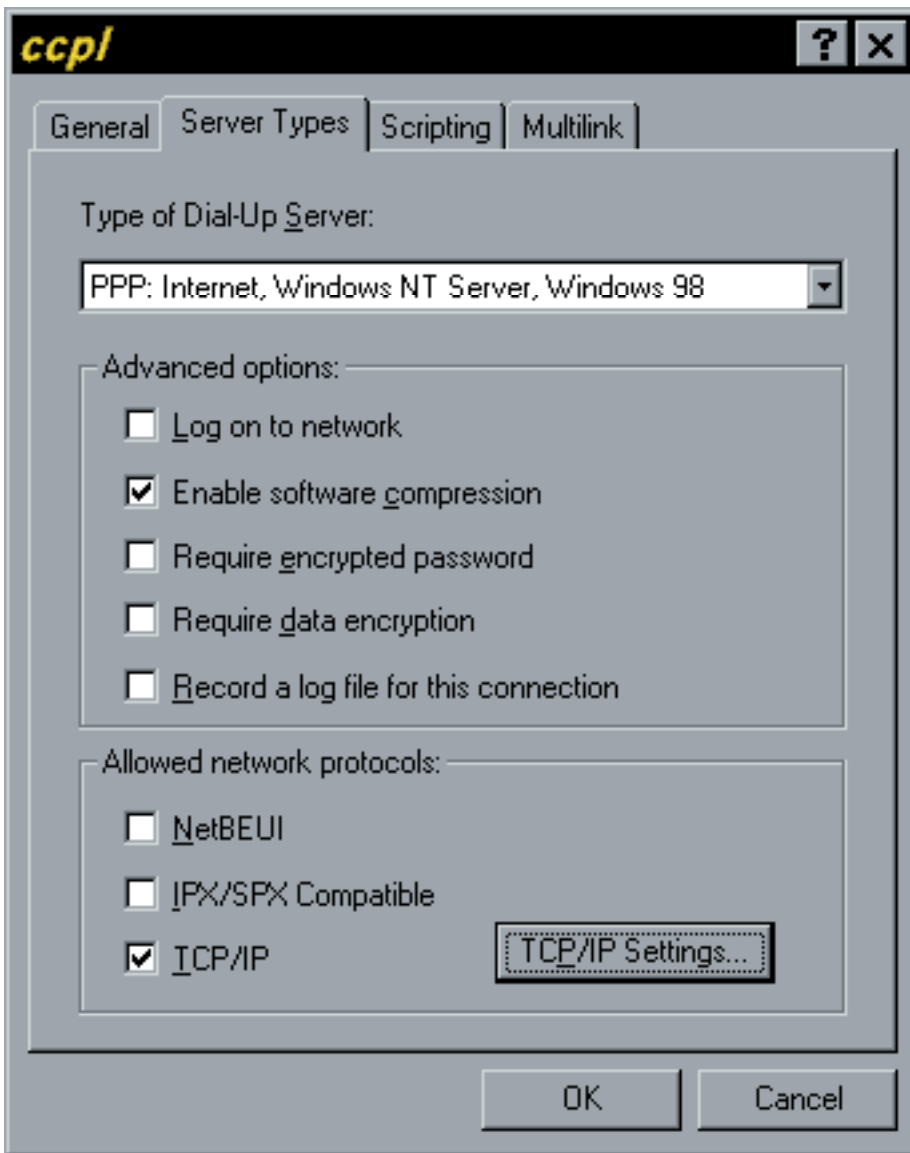


The screenshot shows the "ccpl" Dial-Up Networking configuration window. The "General" tab is selected. The window title bar shows "ccpl" and standard window controls. The "Phone number" section includes an "Area code" dropdown menu (empty), a "Telephone number" text box containing "4107515595", and a "Country code" dropdown menu set to "United States of America (1)". There is an unchecked checkbox for "Use area code and Dialing Properties". The "Connect using" section shows a modem icon and a dropdown menu set to "U.S. Robotics 56k Voice Pro USB", with a "Configure..." button below it. At the bottom are "OK" and "Cancel" buttons.

You should now see an icon labeled "CCPL". Right-click on the icon and then select "Properties" from the drop down menu. (You can also highlight the CCPL icon and go to "File" then click on "Properties.")

Remove the check in the box for dialing properties (Win 98) or country code and area code box (Win 95).

Click on the Server type box or tab. In the Advanced Options section, make sure you only selected "Enable Software Compression". For allowed network protocols make sure you only selected TCP/IP. Click "OK" at the bottom of each screen until you exit your dial up connection settings and return to DUN.



You can now double-click on the CCPL icon and you will see a dial-up connection screen. Enter the email address that we sent you in the username box and the password that we sent you in the password box. Click the "Connect" button and your system should dial in and connect to the Internet. Once you are connected you can open your browser software (Microsoft Internet Explorer or Netscape).